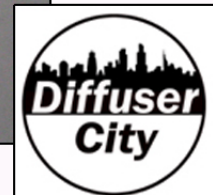
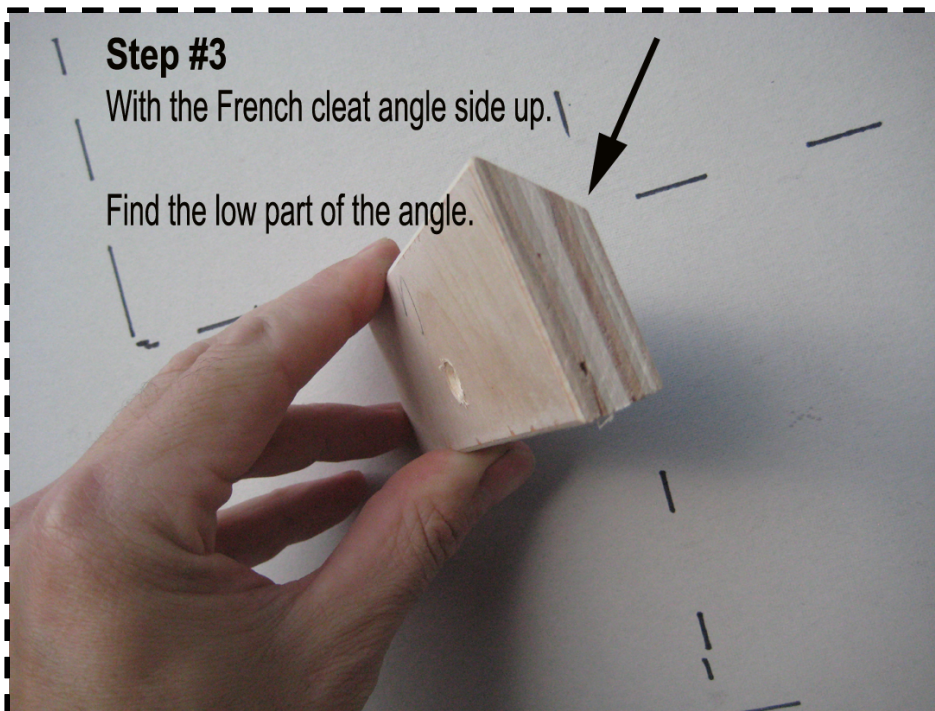
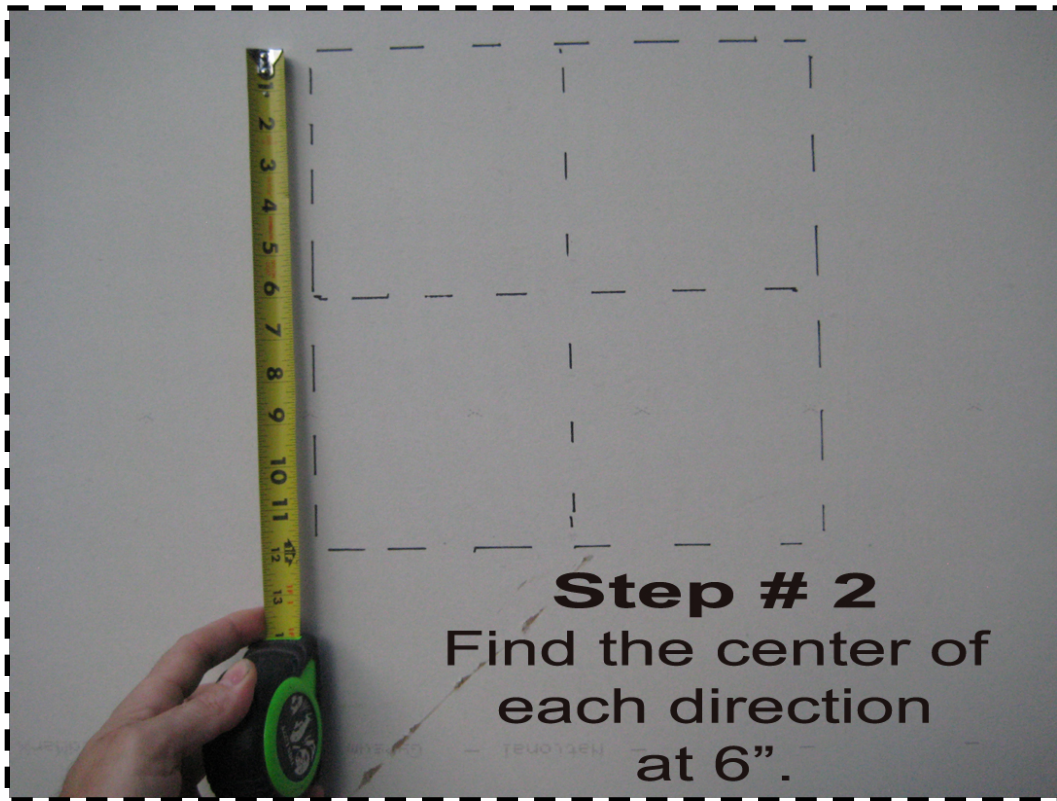


**How to hang  
a 12" x 12"  
diffuser panel into drywall  
with a French cleat.**

**Materials needed:**  
pencil  
tape measure  
French cleat  
2 1/2" drywall screw  
screw driver  
EZ Anchor



**Step #1**  
Visualize a  
12" x 12" square.



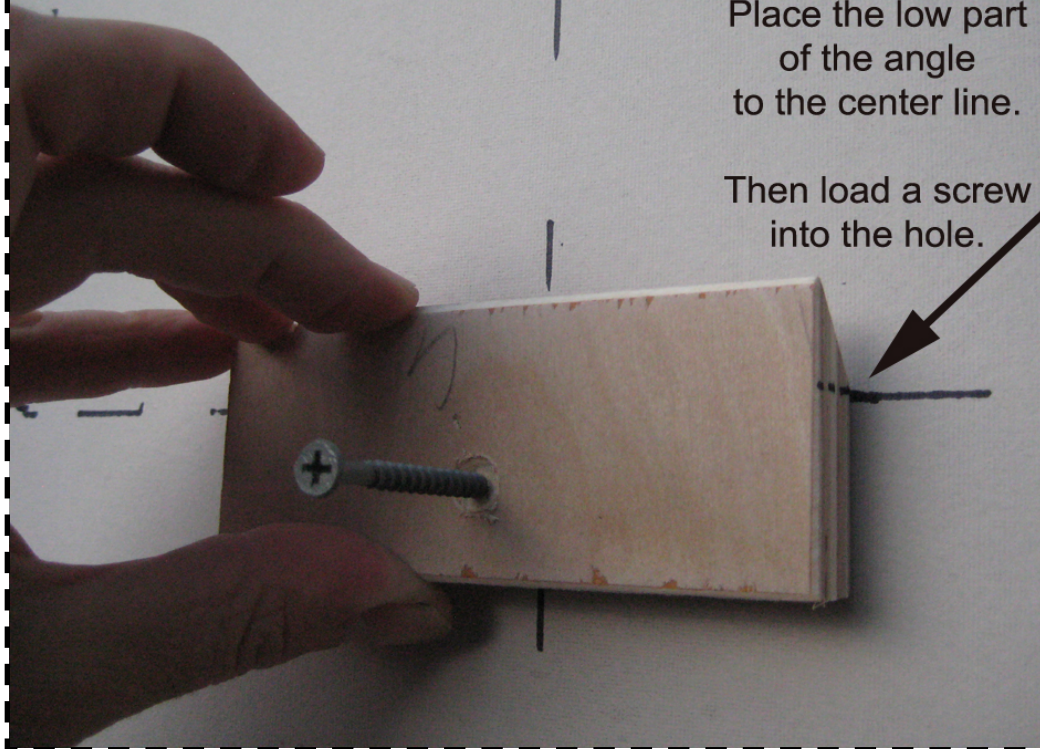


**Step #4**

Turn the cleat angle side up.

Place the low part  
of the angle  
to the center line.

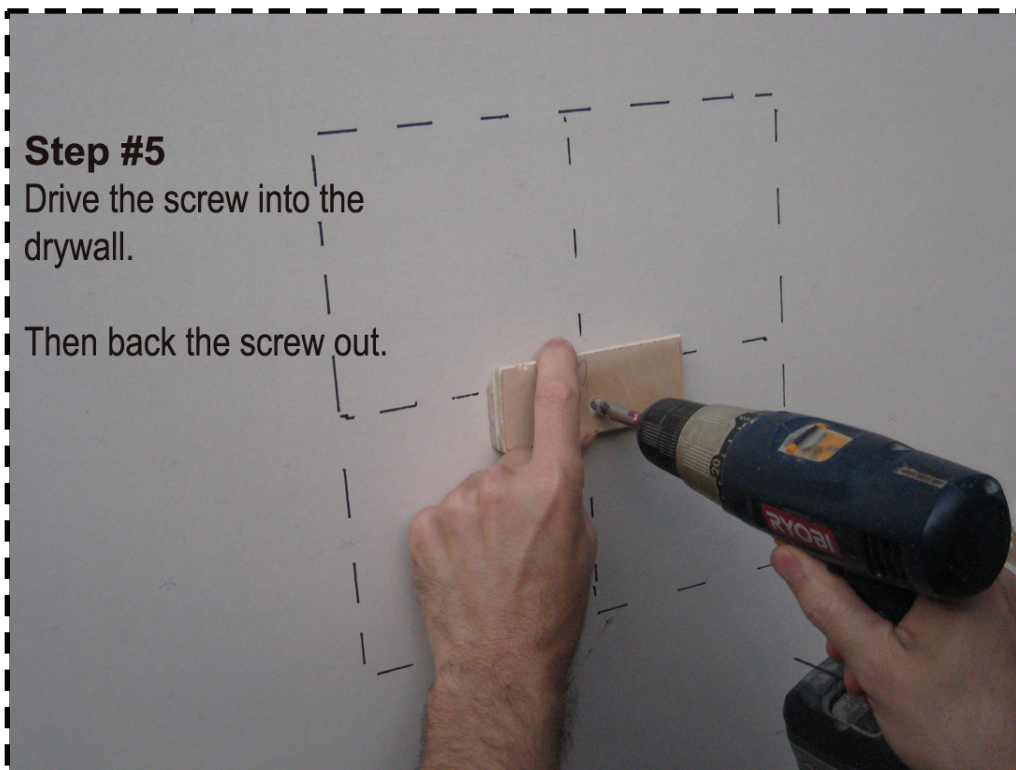
Then load a screw  
into the hole.



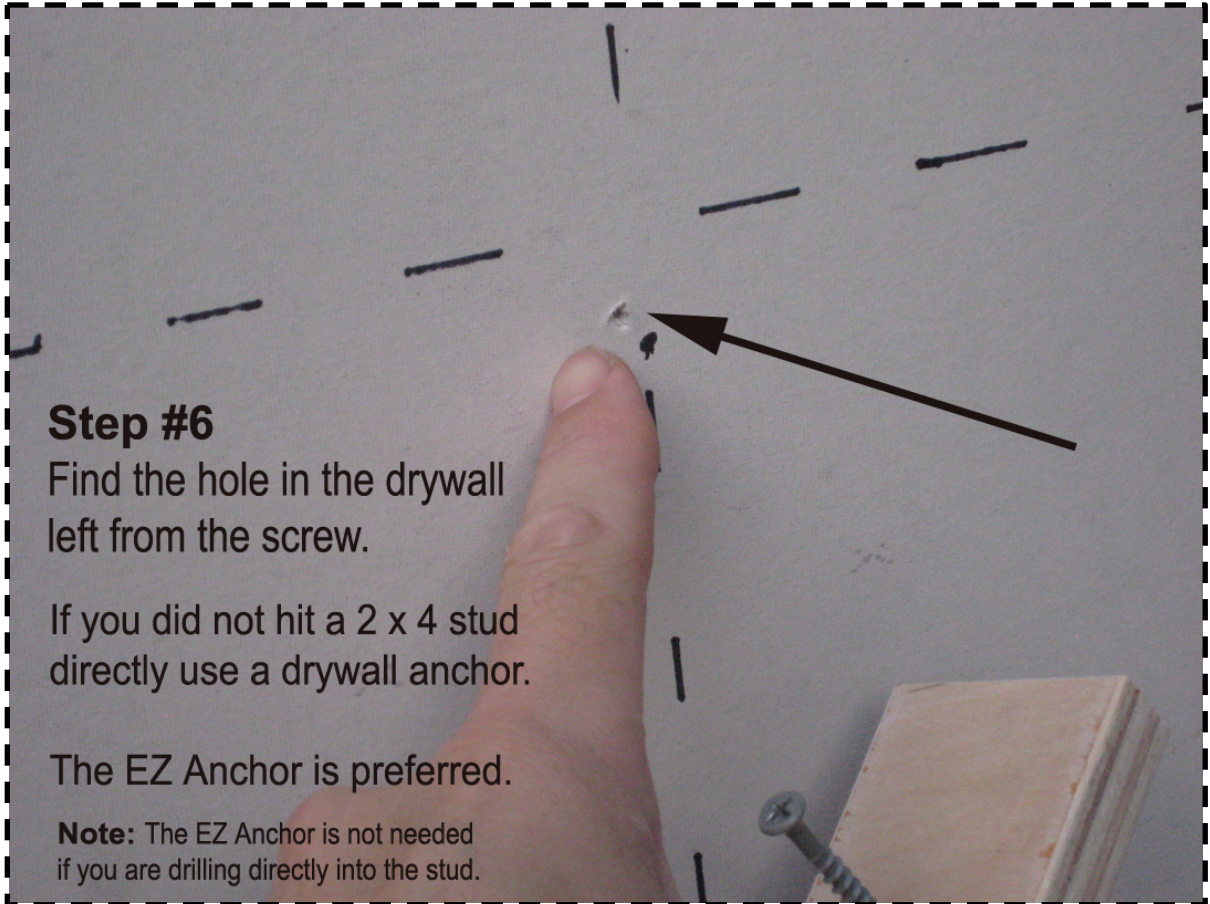
**Step #5**

Drive the screw into the  
drywall.

Then back the screw out.







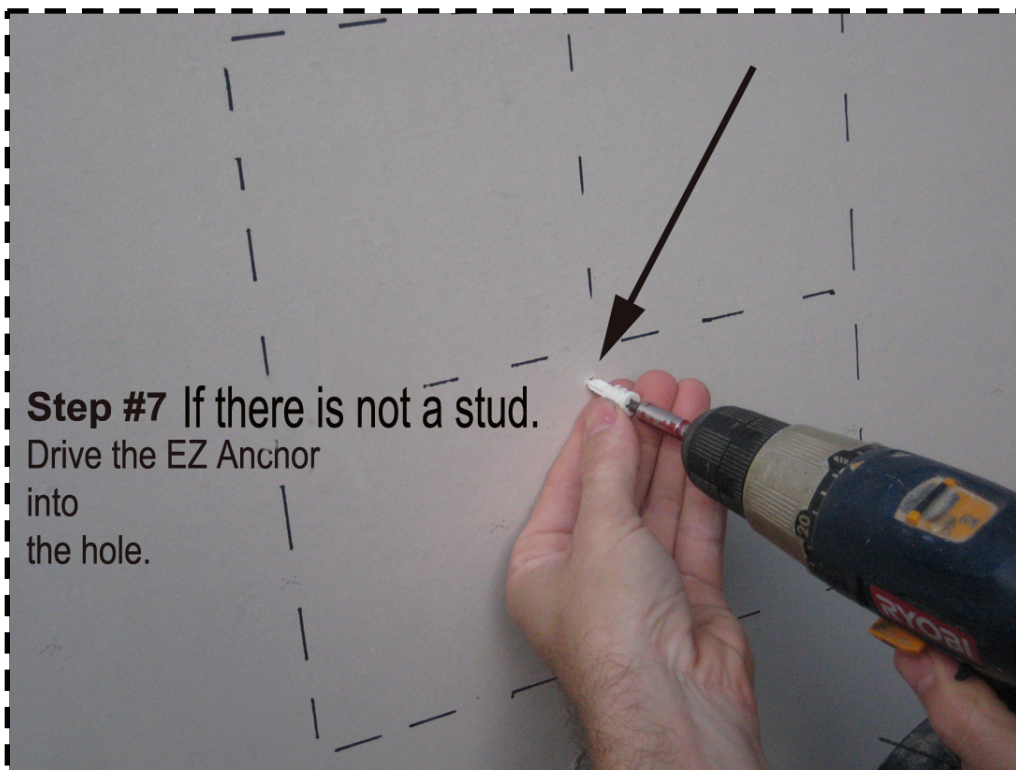
### Step #6

Find the hole in the drywall left from the screw.

If you did not hit a 2 x 4 stud directly use a drywall anchor.

The EZ Anchor is preferred.

**Note:** The EZ Anchor is not needed if you are drilling directly into the stud.

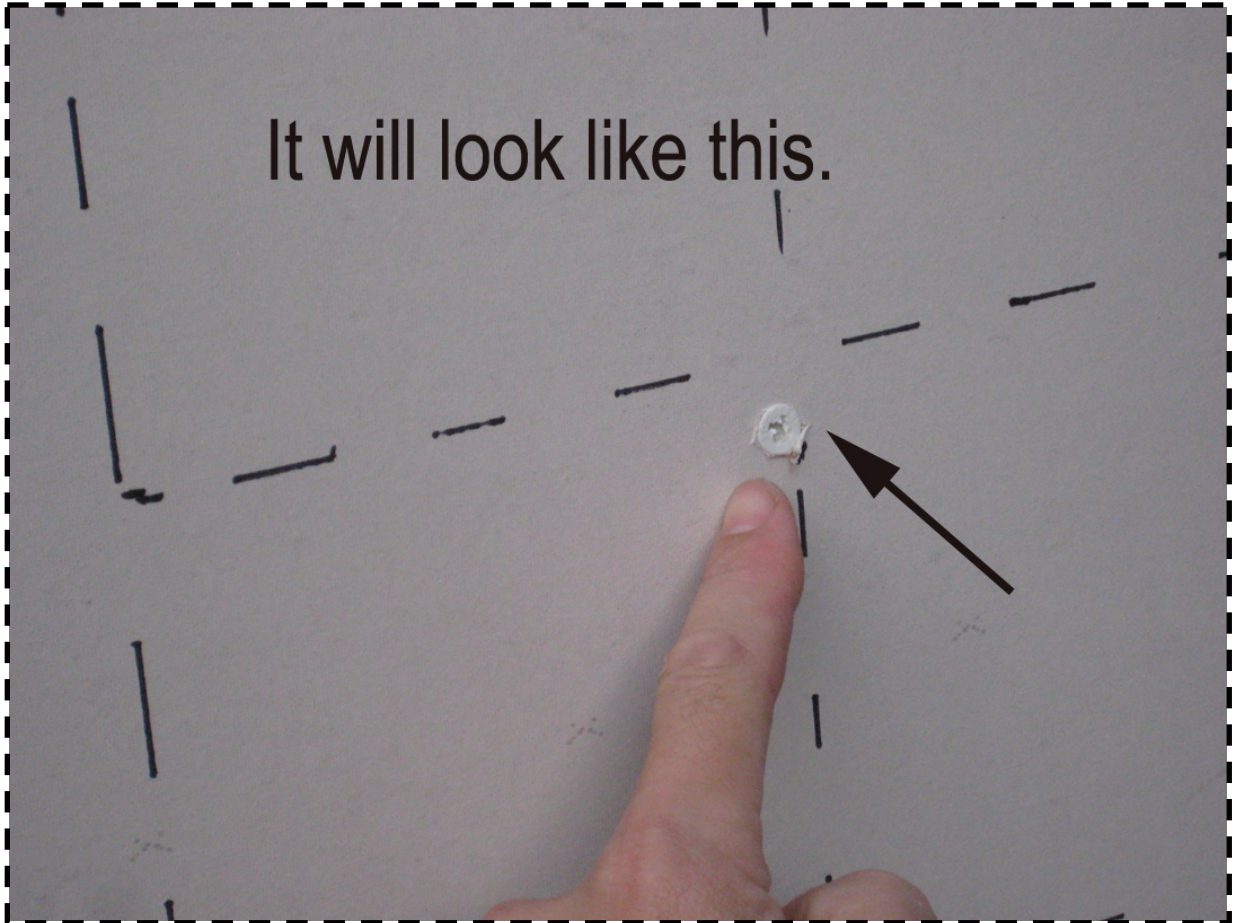


### Step #7

If there is not a stud.  
Drive the EZ Anchor  
into  
the hole.



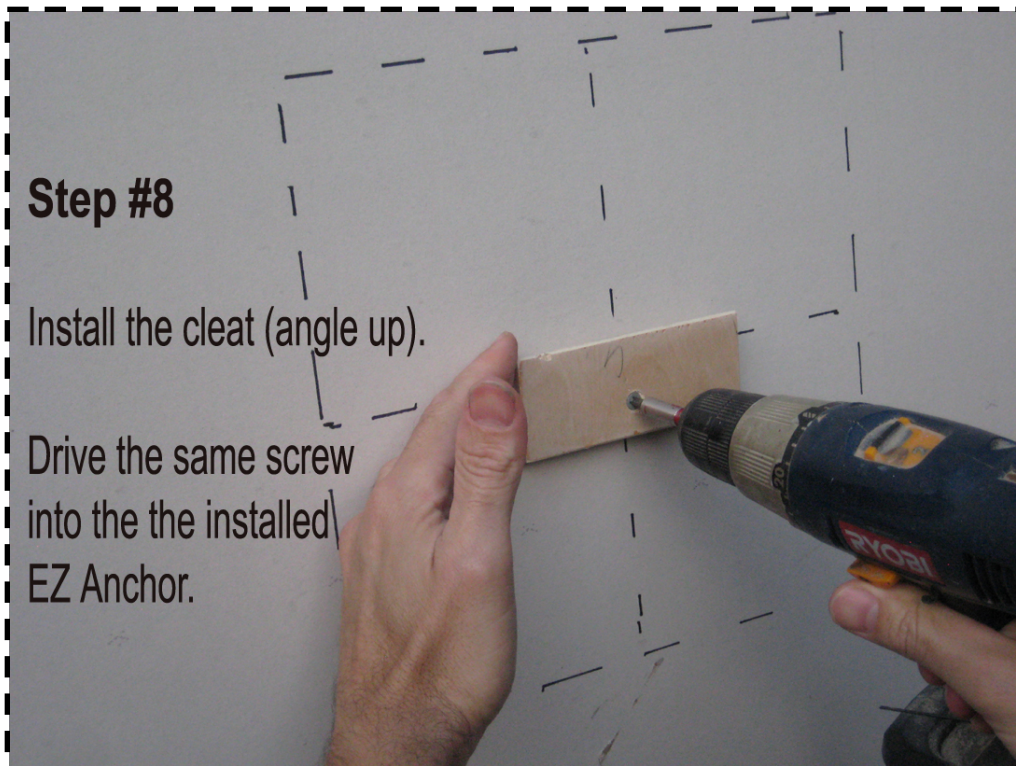
It will look like this.



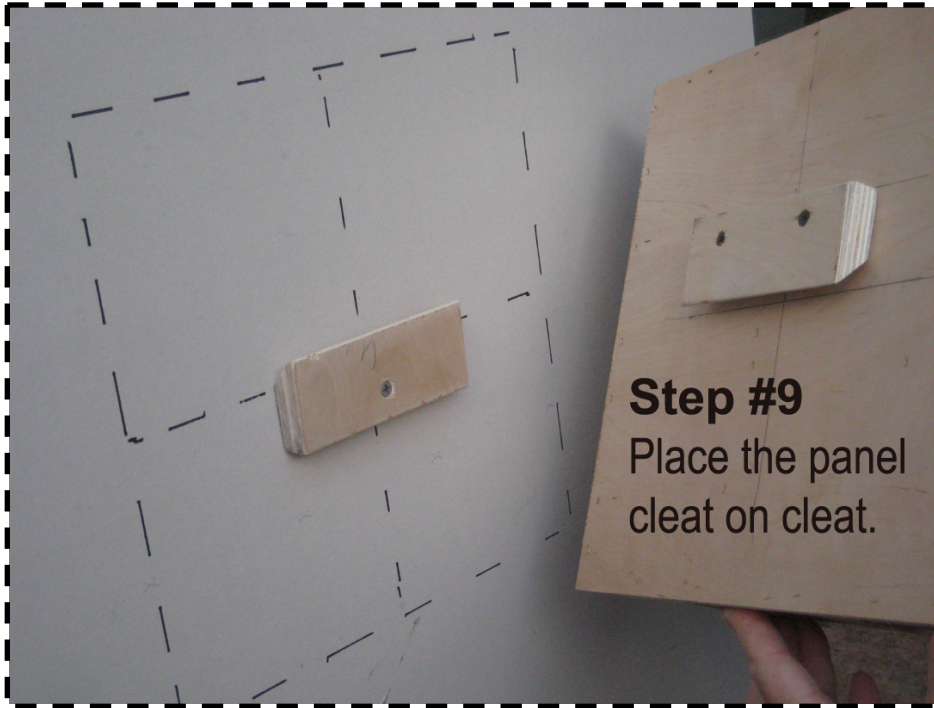
### Step #8

Install the cleat (angle up).

Drive the same screw  
into the the installed  
EZ Anchor.







**Step #9**  
Place the panel  
cleat on cleat.



**Step #10**

Step back  
and enjoy.

Give a thumbs up!

The panel has been hung.

